

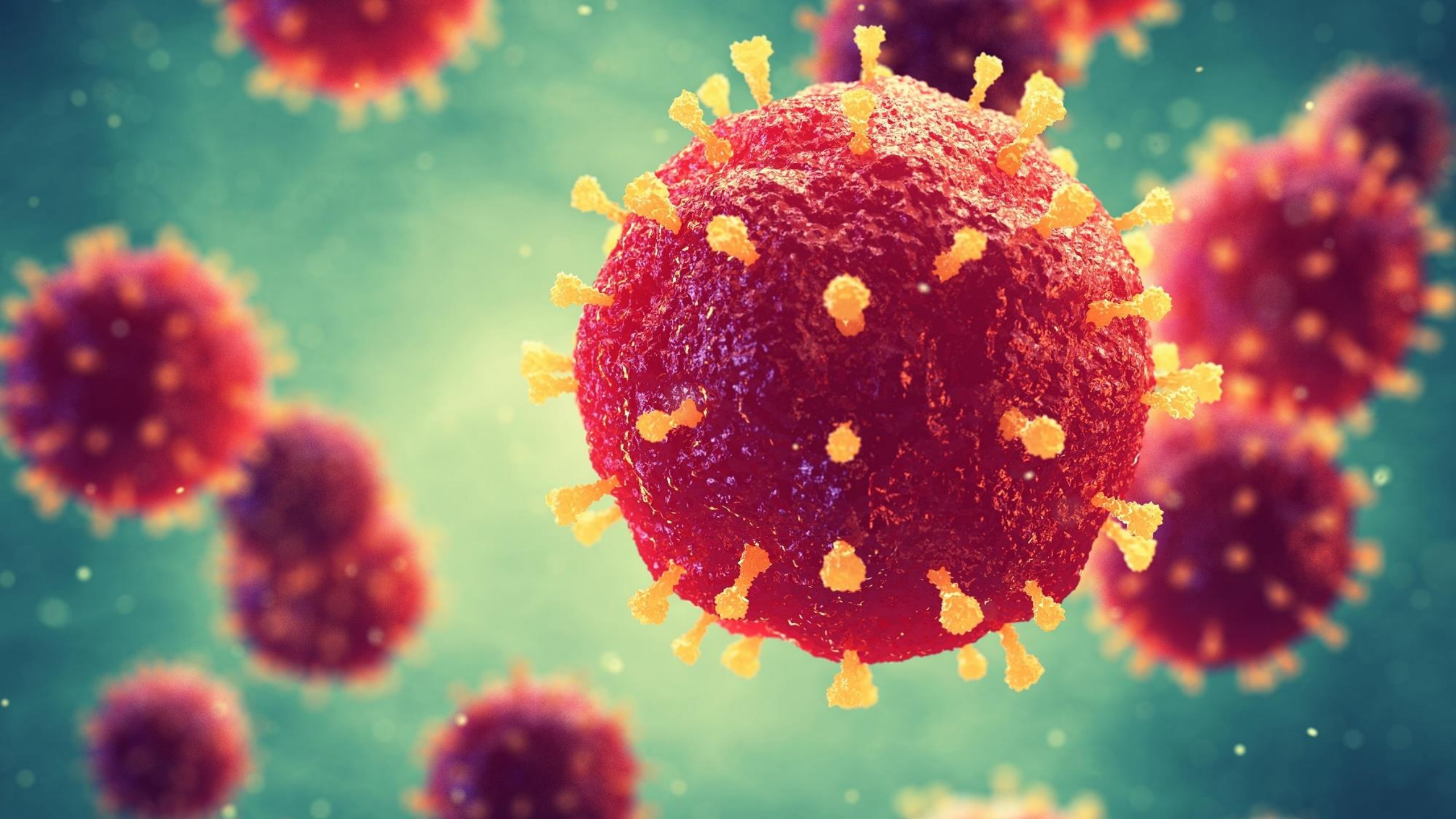
LOVE LETTER

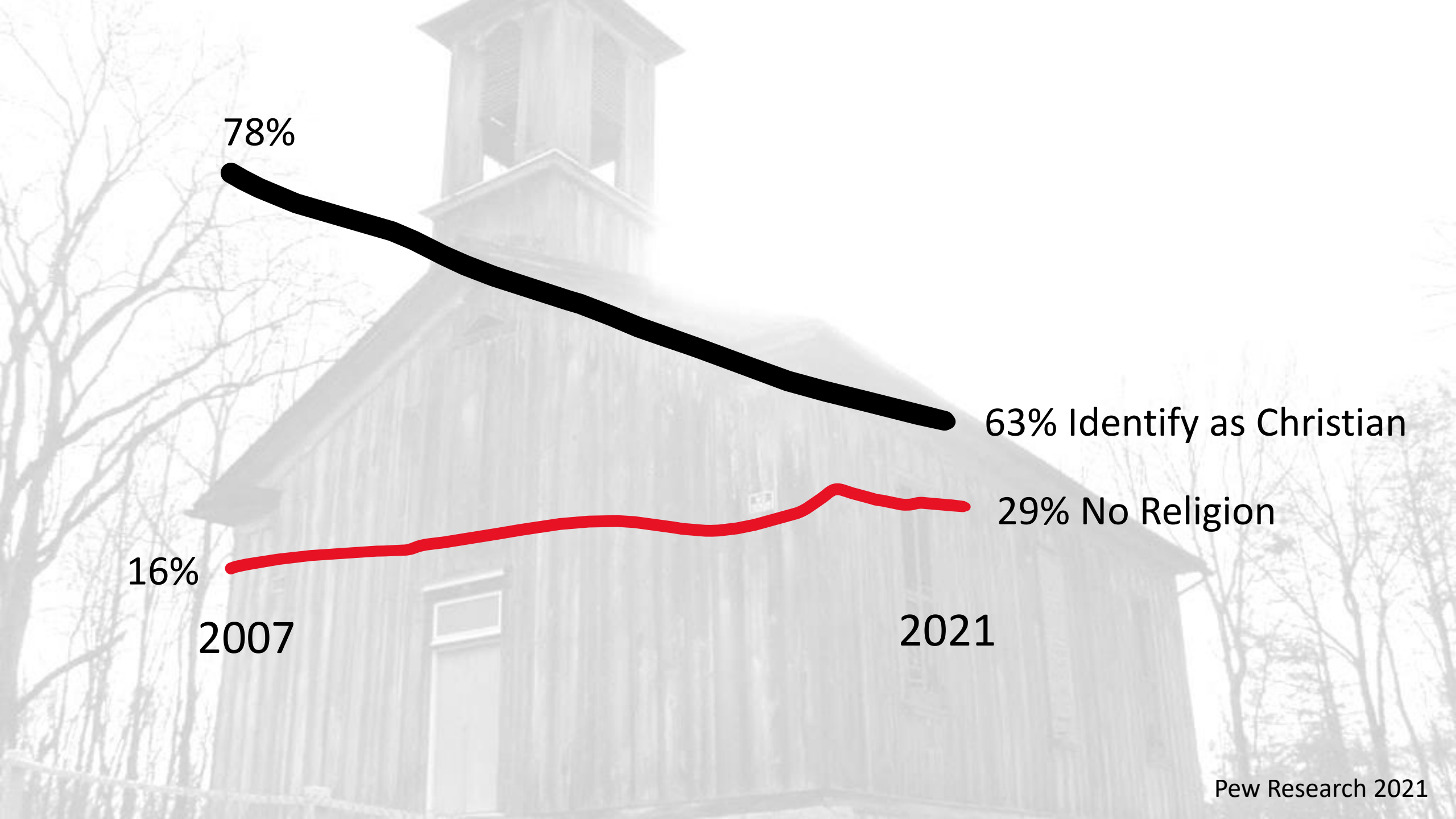
Westminster Presbyterian Church
Seminar June 26, 2022



RUMMAGE

SALE





78%

2007

63% Identify as Christian

29% No Religion

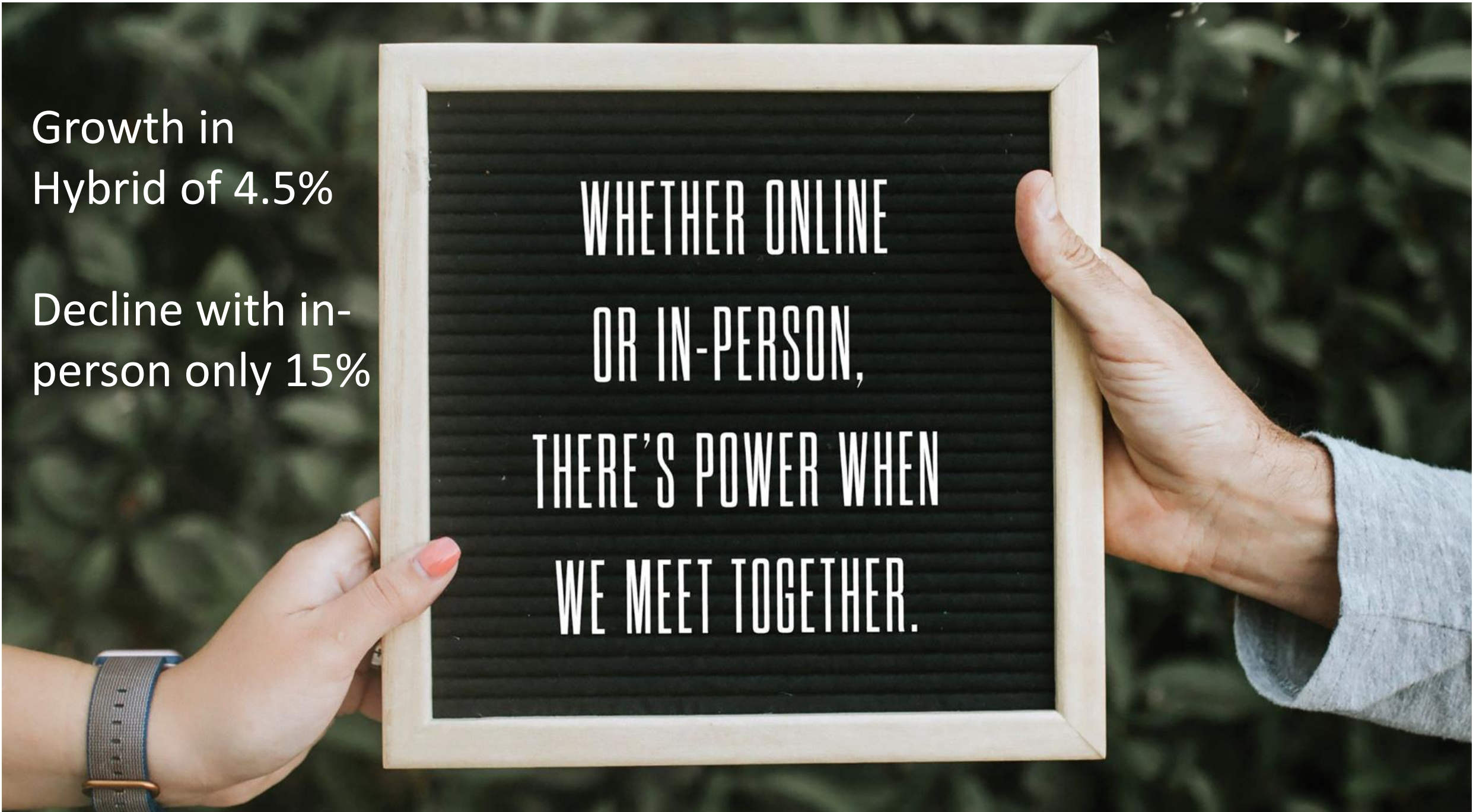
2021

16%

Growth in
Hybrid of 4.5%

Decline with in-
person only 15%

WHETHER ONLINE
OR IN-PERSON,
THERE'S POWER WHEN
WE MEET TOGETHER.



More than 50% of churches started something new in outreach



A Tale of Challenge and Creativity

Size matters –

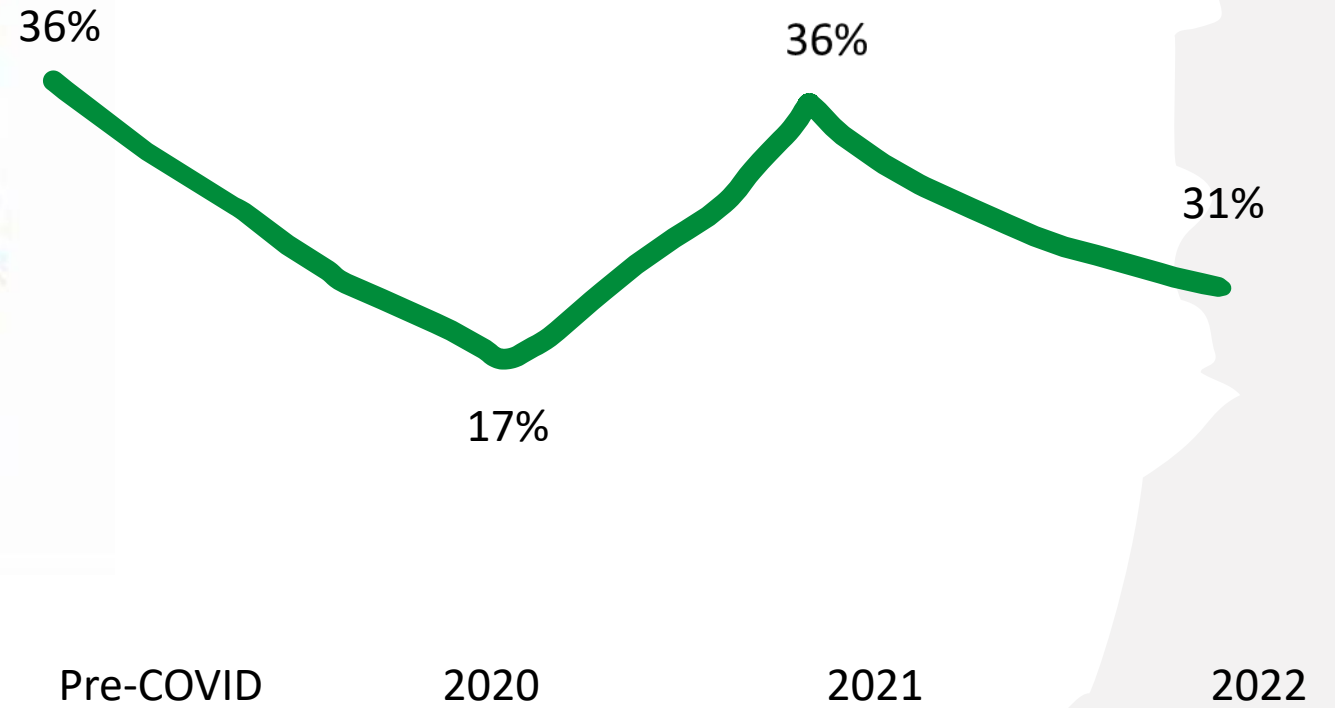
Those churches with 100+ attendees
continued Children's' Ministry
without disruption

Adult Education saw growth with
online offerings





Churches Offering VBS







2001: 60%



2019: 36%

Belief in God down to 81%



Four in 10 believe God
answers prayers

God is
bigger
than
the
Boogie-Man



VeggieTales

The greatest threats

to relevance

in the church

are fear of talking

about money and

failure to address

faith's message

to public life.

The former is idolatry,

the latter,

prophetic anemia.



85% Executives find meaning in their work

85% front line managers & workers
do not find meaning in their work



Americans mention "Family" 69% when asked what gives them meaning

RUSHMORE
tarot cards

THE ROYAL TENENBAUMS
TAROT CARDS
SPOKE ART BAD DADS VII

THE
DARJEELING
LIMITED



Vanessa Gomez Brake at the University of Southern California

GenZ & Millennials



Spirituality and service play essential and understudied roles in mental health





Ruth Santana-Grace and Shavon Starling-Louis as co-moderators



Recommend ant-racism & non-sexual harassment training